



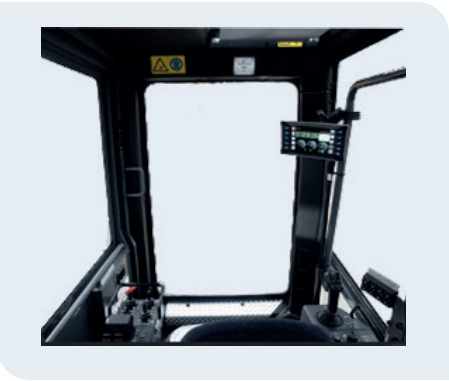
EU STAGE V / EPA TIER 4 Final

DCR L130



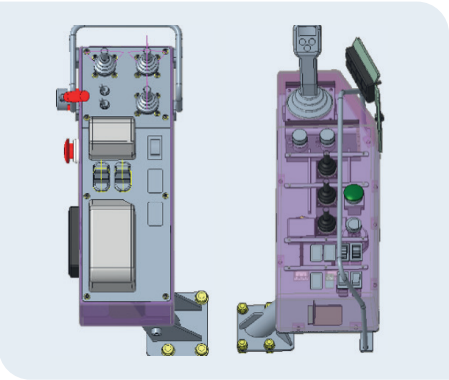
All Products:
www.frd.eu

Highlights & Benefits



Cabin

Ergonomically-friendly ROPS/FOPS cabin, with air conditioning and large windows to optimize operator visibility.



Controls

In the cabin you will find 2 control consols with features like: single lever drilling control, finger touch levers for tramming and touch panel controls. The all in one display allows the operator to quickly monitor the drilling functions. This all provides maximum comfort for the operator.



Features

- Advanced rotary drill tube changer
- Side and rear view camera
- High output compressor
- Heavy duty undercarriage



Highlights & Benefits



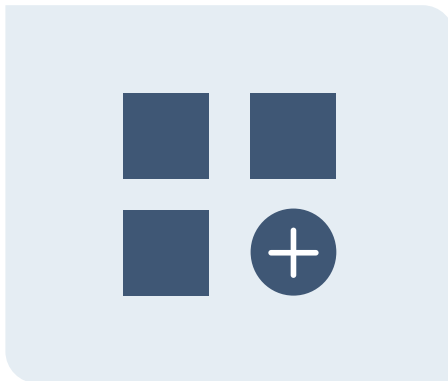
Engine

The eco-friendly Stage V engine in combination with our total fuel saving system, resulting in low fuel consumption without sacrificing on performance. Our commitment to sustainability.



Accessibility

Servicing the DCR L130 is easy with access to all key components, such as the engine, fluid levels and compressor through the large gull wing doors on both sides. Resulting in service friendly and safe access. Maintenance on a level as it should be.



Options

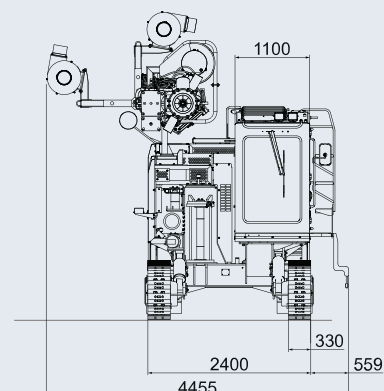
- Available options, but not limited to:
- Centralized grease system
 - Auto refueling system
 - Additional working
 - Warning lights

Specifications

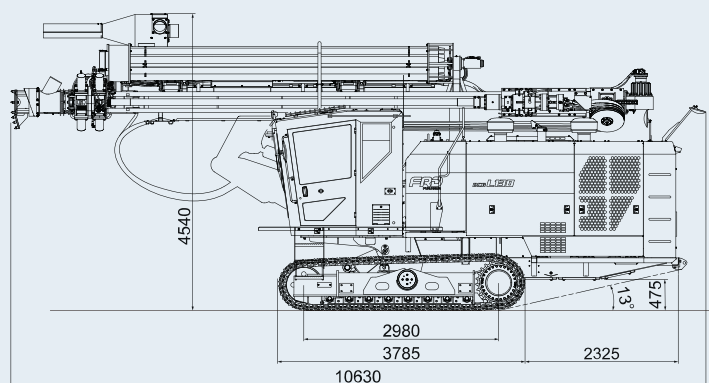
DIMENSIONS & WEIGHT	
Operating Weight * (5m - 6m Rod)	24,400 kg
Overall Length (Shipping)	10,630 mm (10,935 mm)
Overall Width (Transport)	4,455 mm (2,700 mm)
Overall Height (Transport)	4,540 mm (3,500 mm)
UNDERCARRIAGE	
Track Length	3,785 mm
Track Length on Ground	2,980 mm
Track Width	330 mm
Ground Pressure	122 kPa
Ground Clearance	475 mm
Frame Oscillation Angle	± 7.5°
Tramming Speed	0 ~ 3.5 km/h
Gradeability	46.6 % (25°)
Maximum Traction Force	160 kN
DRILL MOTOR	
Type	DOWMAX / ME350
Reduction Ratio	1 : 3.071
Maximum Torque	4.2 kN-m
Maximum Speed of Rotation	120 min ⁻¹
ENGINE	
Model	C13B (Stage V, Tier4 Final)
Type	Diesel, Watercooled 6 Cylinders
Brand	CATERPILLAR
Power Output	340 kW / 2,000 min ⁻¹
Fuel Capacity	730 L
DEF Capacity	70 L
HYDRAULIC EQUIPMENT	
Variable Displacement PV Pump	PV Pump 2
Fixed Displacement Pump	Gear Pump x 3
Hydraulic Oil Reservoir Capacity	280 L
COMPRESSOR	
Model	PDSK900 - S20
Type	2 Stage Screw Compressor
Free Air Delivery	24.3m ³ /min/1,800 min ⁻¹ (27m ³ /min/2,000 min ⁻¹)
Discharge Pressure	2.5MPa/1,800 min ⁻¹ (2.3 MPa/2,000 min ⁻¹)
BOOM	
Model	JF325
Type	FixBoom
Boom Lift Angle	Up 50.5°, Down 3.9°
Boom Swing Angle	Right 30°, Left 8°
GUIDE SHELL	
Model	GH834
Length (5m Rod)	9,910 mm
Length (6m Rod)	10,010 mm
Feed Length (5m Rod)	5,694 mm
Feed Length (6m Rod)	6,694 mm
Feed Type	Hydraulic Motor Driven Chain
Guide Slide Length	1,500 mm
Guide Swing Angle	Right 16°, Left 90°
Guide Tilt Angle	120°
Maximum Rod Pull-Out Force	30 kN

DUST COLLECTOR	
Model	A885
Suction Capacity	75 m ³ /min
Number of Filter Element	12
Type of Dust Ejection	Automatic Air Pulse Jet
ROD CHANGER	
Model	GR803
Number of Rod Storage	8
Rod Length	5,000mm
Rod Diameter	76, 89, 102 mm
Bit Range	89-165mm
ELECTRICS	
Battery	12V x 2; 176 Ah / 5 h
Light	24V; 70 W x 4
Voltage	DC 24 V
OPERATING ENVIRONMENT	
Ambient Temperature Range	-15°C ~ +45°C
Maximum Altitude	Max. 2,000 m

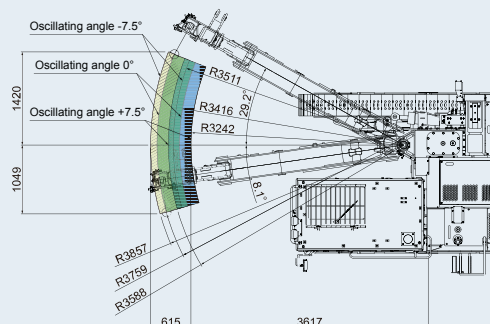
Dimensions (mm)



Dimensions (mm)



Drilling coverage (mm)



Note: "Operating weight" includes weight of fuel and oil (full).

Specifications are subject to change without prior notice



FRD - Furukawa Rock Drill Europe B.V. ©

Proostwetering 29 | 3543 AB Utrecht | The Netherlands

T +31 (0) 30 2412277 | E frd@frd.eu | www.frd.eu

DCR L130 | CRAWLER DRILL | FRD ©